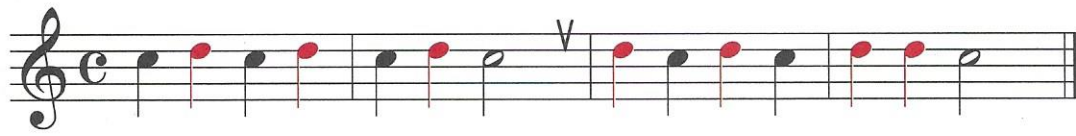
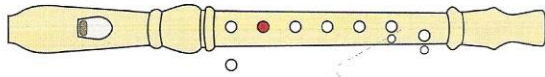


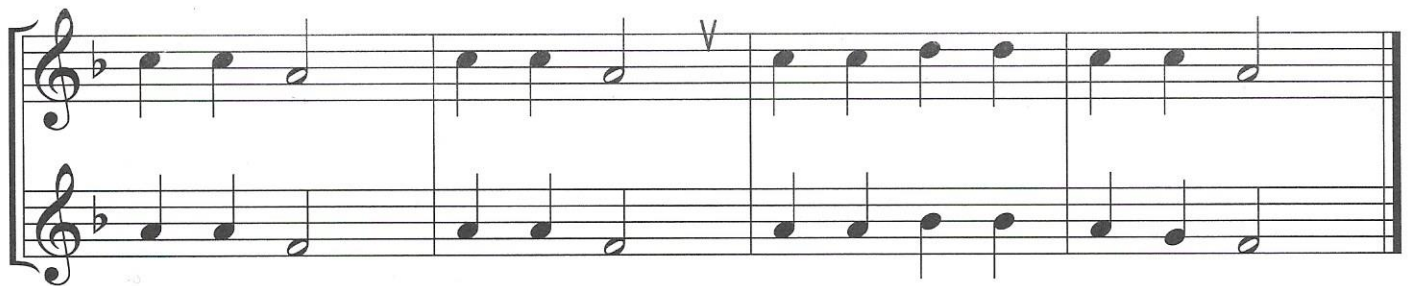
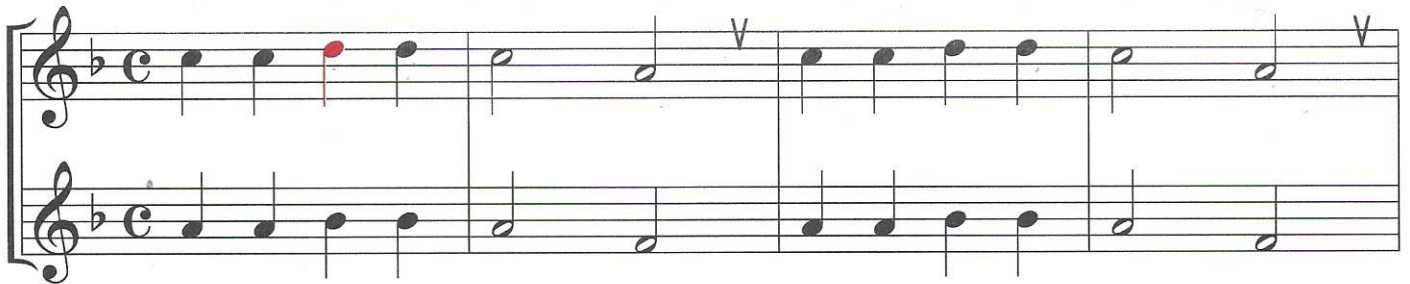
Nota d²



Le po-sku-si, saj bo šlo, res ni tak' ze - lo tež-ko.

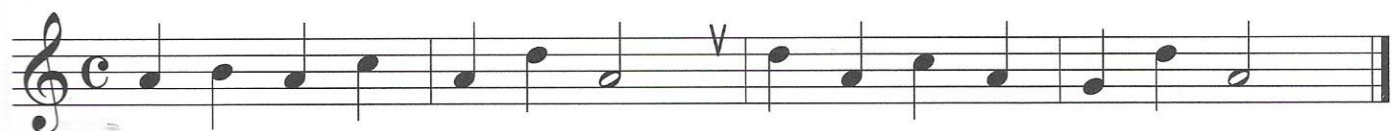
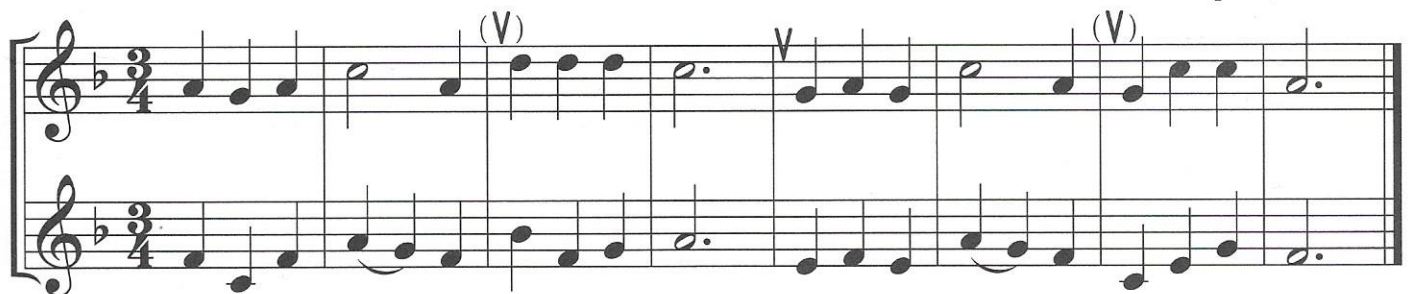
18. Didldajčka

Slov. ljudska, prir. M. Strmčnik



19. Palčkove sanje

H. Strmčnik, prir. M. Strmčnik



Le po - sku - si, saj bo šlo, res ni tak' ze - lo tež - ko.